

## The Profile Module

The ProfileModule is optional software for the DynamicDrivePool (DDP) developed for colleges, schools, universities and larger companies.

## Introduction

A standard DDP Connect screen shows all desktops and drives selected in the Drives page. This information can be confusing when many desktops and drives are in use. There are also situations where management prefers operators to work on a "need to know" basis. Creating DDP profiles is a good solution for these issues. A DDP profile shows desktop and drives of one user. Such profile can be activated by typing user name and password in the DDP Graphic User Interface.

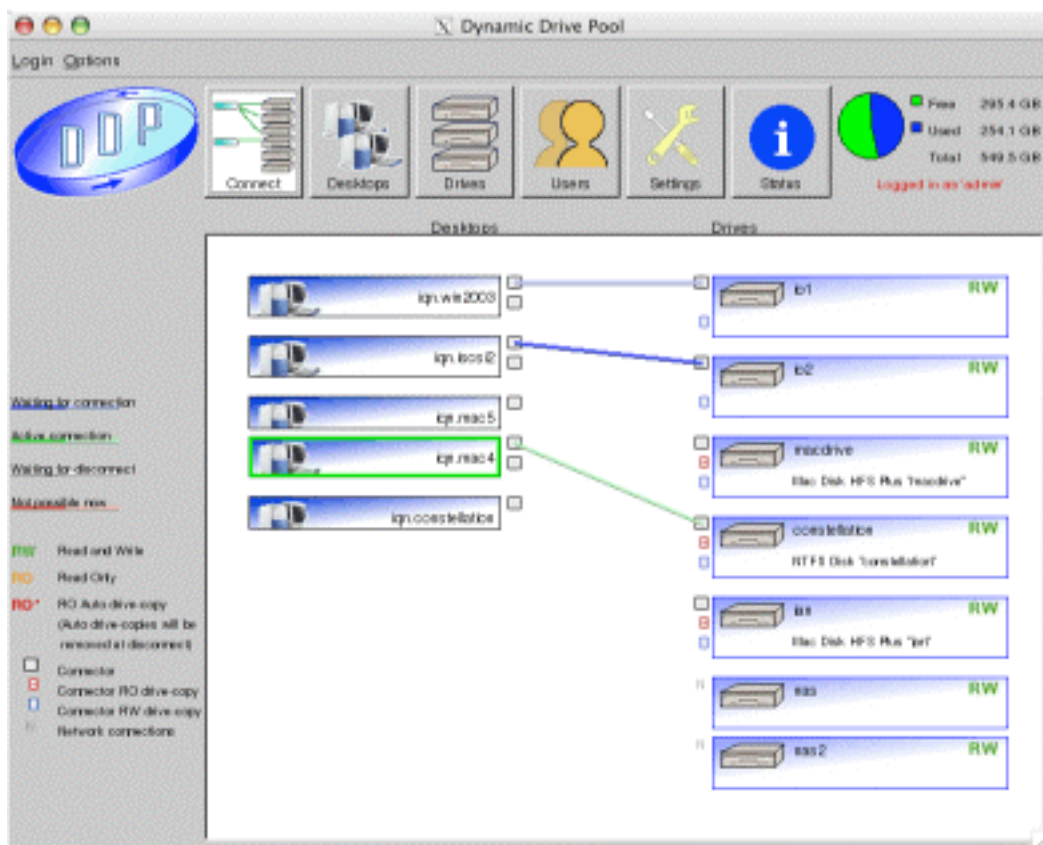


Figure 1. Showing all desktops and drives.

## The DDP Connect Screen And A Profile

Users with passwords are entered in the Users page and a directory with name "jan" can be made in the Drives page. Drives in this directory show up in the profile. Drives not included in any directory show up in all profiles. Figure 1 and 2 show the Connect Screen without and with profile. This part of the ProfileModule is available for Windows XP, 2003 and Mac OSX.10.3.X, 10.4.X. and 10.5.X.

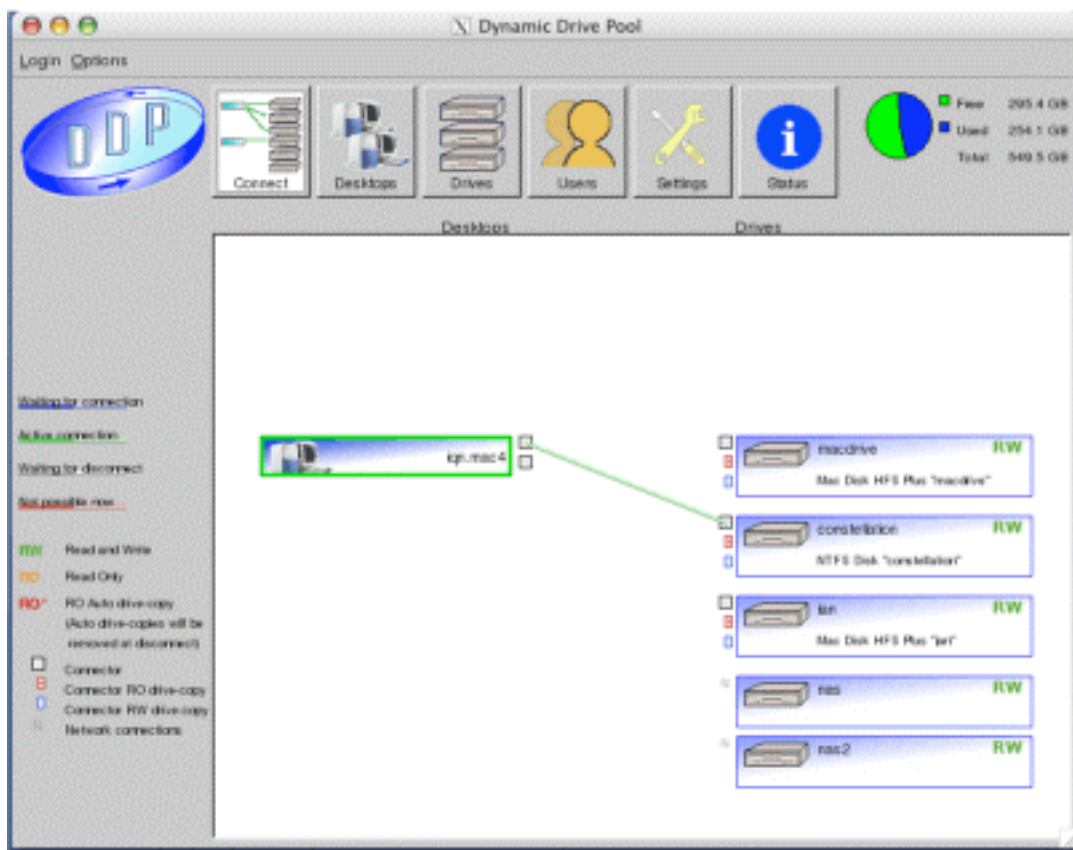


Figure 2. Profile of user "jan" one desktop and drives.

## Apple Mac User Account Linked To A Profile

Profiles can also be linked to Mac user accounts. When the user logs in the drive icons automatically appear on the desktop screen. No DDP access is required. An example of a drive called "macdrive" which is placed in directory "jan" is given in figure 3. When logging in as user "jan" drive icon "macdrive" appears. The user can now work with this drive as if it is a normal local drive.

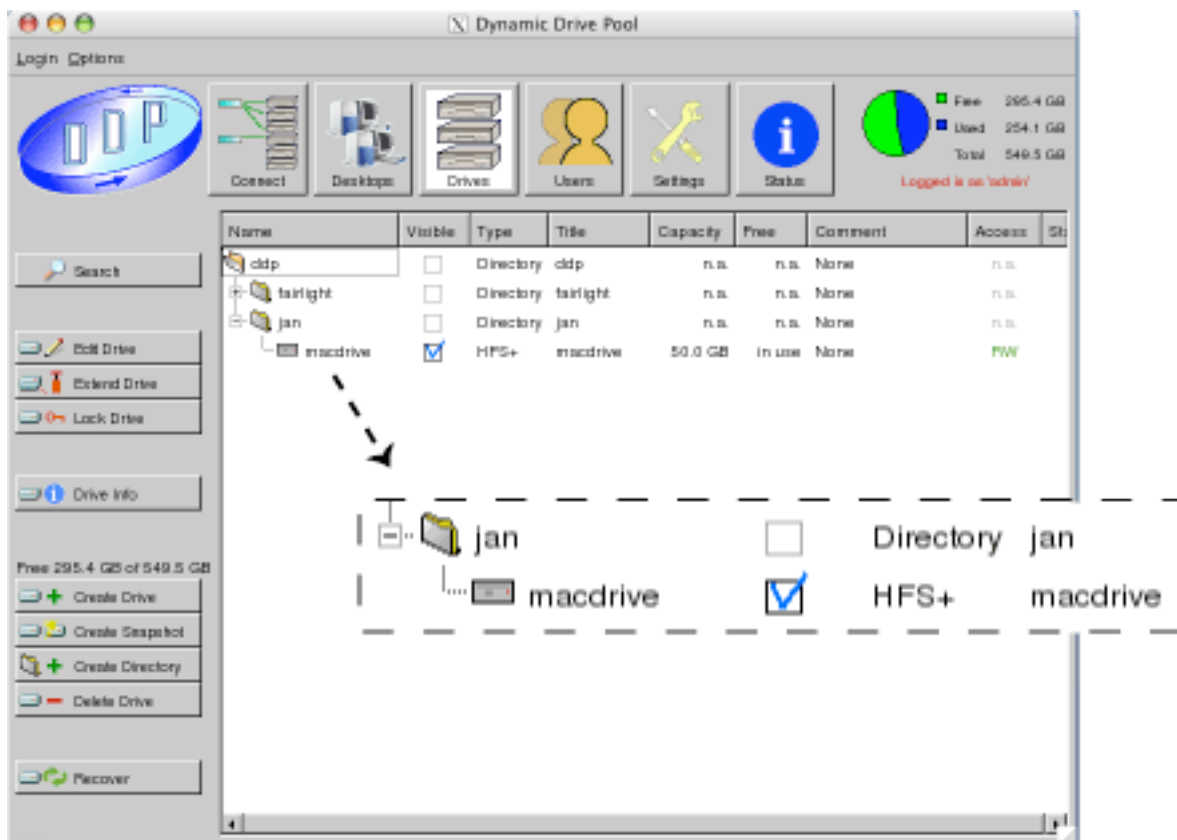


Figure 3. The Drives page with directory "jan".  
This directory contains the drive: "macdrive".

This feature is available for Mac OSX.10.3.X, 10.4.X and 10.5.X.

The ARDIS program DDPConnect must be placed as login item in the Mac user account.

